



city college

Burslem | Stoke-on-Trent

Prospectus 2024/25



We're different...and we make a difference!



# Welcome!



Thank you for showing an interest in joining City College. I hope that you will find this prospectus both useful and encouraging. We aim to prepare students for the future, and have a special experience on offer for you.

We value your aspirations for the future and are fully committed to supporting you on your university or careers-based journey. One of our great strengths is that we offer a continuity of experience and that we are small enough to care for every student on a personal level. Many of our college students choose to stay with us at the end of Year 11 in an environment where they are known and which encourages the highest standards.

If you are new to City College, you will find that you become part of a supportive, welcoming community that aims to provide a personalised college experience to maximise your full potential. Personal mentors support students on a one-to-one basis and monitor their progress so that they feel supported and encouraged during their transition to the adult world.

Making decisions about the next stage of your education is exciting and challenging. Exciting in the sense that you can now choose to focus on the experience that will lead you to success and fulfilment and challenging because you need to make informed decision which will open career options for your future.

At City College you can trust us to help you make the right decisions.

**Carl Ward, Chief Executive Officer, City Learning Trust**

City College is different – in fact, we pride ourselves on doing things differently.

Big enough to deliver and small enough to care, City College offers a unique learning experience.

People matter here. A genuinely personalised approach to study is core to our offer. Staff support and inspire all students not just to achieve but to dream. We understand every one of our students has a distinctive set of needs and aspirations, and our aim is to guide each on their separate but shared paths to future success.

The journeys embarked upon at City College are real: our alumni are studying and have studied on a variety of courses across the length and breadth of the UK, or have gained employment in local business with the skills needed to embrace challenge and maximise their earnings.

Our most valued difference is making a difference – enhancing our students' future chances and choices.

Thank you for showing interest and we look forward to you joining us at City College.

**Justin Heath, Strategic Lead, City College**



# Our history

TRADITIONAL YET MODERN, HISTORIC YET FORWARD-LOOKING

In 2015, City College opened as Haywood Sixth Form Academy in the centre of Burslem, Stoke-on-Trent, fulfilling a longstanding City Learning Trust commitment to providing a sixth form for the students and families living in the local area. Comprising of a beautifully restored Grade II listed building with modern facilities and additional common room space, the campus has a community spirit and is an exciting learning environment.



City College is housed in the historic Burslem School of Art, which has had a notable impact upon the history of Stoke-on-Trent. Many students of the School went on to become well-known artists and designers, with others less well-recognised, but equally important in the development of ceramic manufacturing in the city. The School now provides 12 teaching spaces with 4 dedicated subject rooms; a specialist computing lab, a Design and Technology workshop, a Science laboratory and the 'Arthur Berry' room, a dedicated studio to support the development of young artists.

City College is in the centre of the local community, and central to its ethos is the desire to work with the organisations and businesses that surround it.

# Level 3 pathways

## A levels and BTECs

At City College, students can choose to follow dedicated subject pathways, such as **Art & Design** and **Health & Social Care**, where they complete 2 or 3 qualifications in these areas, or can mix and match from our range of courses that also includes:

- **Applied Psychology,**
- **Criminology,**
- **History,**
- **English,** and
- **Sport.**

Across their two-week timetable, students have five hours of Independent Study time within college. These hours are chosen by the students, and this time is used to carry out revision, wider reading, coursework and homework. Attendance during this time counts towards a student's overall attendance figures, and staff are on hand to support.



# GCSE English and Maths re-sits

For some students, GCSEs may not have gone as well as they could have done, and so we offer students who have not achieved a 4 in English or Maths the opportunity to re-sit these exams, with the support of dedicated teaching time.



## Employability & Life Skills

Our unique and bespoke Employability & Life Skills course allows students to develop skills in independence, travel, home cooking, confidence, social communication and awareness, employment and money handling, through BTEC qualifications.

Students will learn in a supportive, safe and welcoming environment, with opportunities to explore the city and beyond through educational visits, enrichment and travel training programmes.


This is ideal for students who have achieved a minimum of one GCSE at grade 1-3, have SEND needs, and who wish to develop their confidence and independence. All applicants will be considered on an individual basis.



# Pastoral support

Accommodating a variety of student aspirations and needs, we are proud to be an inclusive and safe space where our young people can be their true selves, and provide a supportive environment in which individuals are able to flourish.

Those wishing to apply for university are supported through the UCAS process with external speakers, visits to institutions and personalised feedback on statements allowing students to be sure that their applications are aligned with what universities are looking for, and they are informed about all the course offers available. Others wishing to find apprenticeships or employment are supported in developing their CV and personal skill set so the transition into the workplace is smooth.



All students will require support in their personal development whilst at City College. The tutorial programme follows the KS5 PSHE curriculum and is designed to raise awareness of the world around them whilst developing confidence and independence, by providing access to career planning, financial advice, and support on health and welfare issues.

Students have also regularly benefited from our contacts with local employers when gaining that first step on the career ladder, and have gone on to complete successful placements and begin rewarding apprenticeships.





At City College, we aim to support our students' all-round education beyond their chosen courses. We do this through Assembly and Tutorial time three days a week, and through a dedicated programme that takes place on a Monday – CC@CC.



Culture and Confidence at City College is a bespoke series of opportunities that prepare students for life in the wider world beyond education. At City College, we enrich our students' learning through PSHE, life skills, and careers education, as well as visiting places of interest in the local community, and engaging our young people with topics of challenge and debate. For students who need to build confidence, whether for employment or university, we offer opportunities to develop this in a safe and supportive environment, and adapt our offer based on the needs of our students. External speakers contribute to a rich programme delivered throughout the year, which ensures students leave us fully aware of important issues they may encounter, and how to manage them.





# The City Learning Trust



City Learning Trust

Inspiring Outstanding Achievement



The City Learning Trust is a Multi-Academy Trust of schools with a mission to create a world class education system in Stoke-on-Trent for the communities we serve. We are a family of schools sharing resources and expertise, united by our values and placing children first in everything that we do.



Children in the City Learning Trust have the best opportunities to develop their education and skills. They get a positive start in life to help them gain employment in the future and instil in them a desire for lifelong learning so they can adapt in an ever-changing world. In our Trust, education is linked right the way through from nursery to A Level or Apprenticeships, and skills and qualifications are allied to an increasing understanding of the value of continuous learning and social responsibility.



# Application form

This form is also available at [clt.citycollege.coop/application-form/](http://clt.citycollege.coop/application-form/)

Name: .....

Date of Birth: .....

Current school: .....

Tel. no.: .....

Email: .....

Address: .....

.....

.....

Which course(s) are you applying for?

- Level 3
- GCSE English / Maths re-sit
- Employability & Life Skills

## Level 3 applicants ONLY

Please add your subject choices and your predicted grades, where applicable.

Choice 1: .....

Predicted grade: .....

Choice 2: .....

Predicted grade: .....

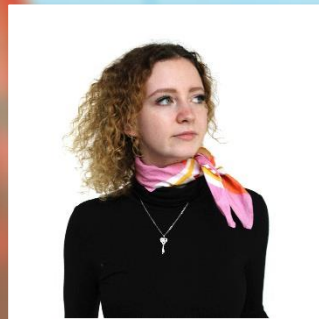
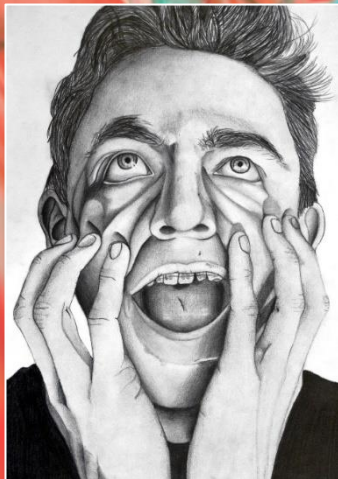
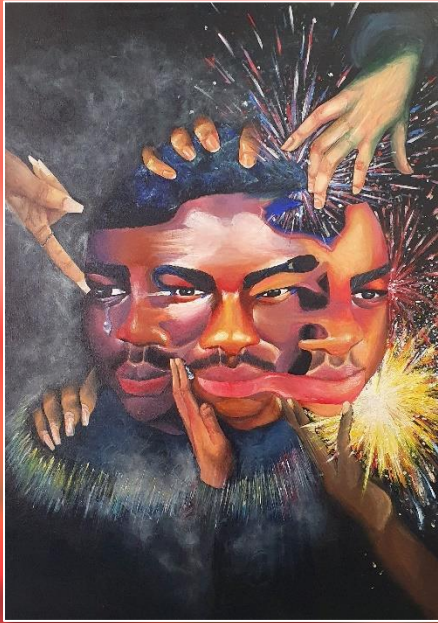
Choice 3: .....

Predicted grade: .....

Reserve choice: .....

Predicted grade: .....

Thank you! We will be in touch with you to discuss further.



A selection of A level Art & Design students' work



This prospectus has been printed on recycled paper, and we have reduced the number of pages in a bid to be more sustainable.

Please recycle once you are finished.



The image on the cover is taken from the stained-glass window at City College, created by students of Burslem School of Art in 1932.



Burslem School of Art | Queen Street | Burslem | Stoke-on-Trent | ST6 3EJ | Tel: 01782 355964 | Email: [infocitycollege@citylearningtrust.org](mailto:infocitycollege@citylearningtrust.org) | Web: [clt.citycollege.coop](http://clt.citycollege.coop)



citycollegestoke



CCollegeBurslem



CityCollege\_Burslem